

# Scientific surveys of lobster and rock crab in the Magdalen Islands

**Dates:** September

**Recurrence:** Annual, since 1995 and 1999

**Location:** Magdalen Islands

**Vessel:** CCGS Leim / CCGS Butor

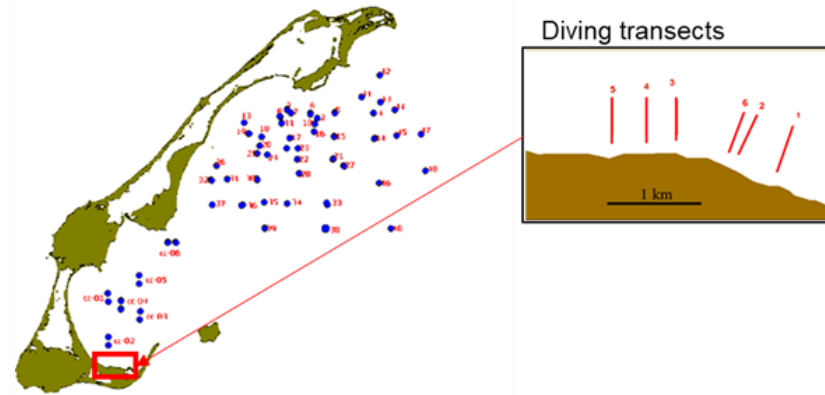


Figure 1: Positions of stations and transects sampled during trawl and diving surveys in the Magdalen Islands.

## Description

Since 1995, a Nephrops trawl survey (door trawl) has been conducted aboard the CCGS Leim in the Magdalen Islands. Each year, 70 trawl hauls are conducted at 50 fixed stations in the area between Havre-aux-Maisons and Grande-Entrée as well as in Plaisance Bay. A scuba survey has also been conducted since 1999, where a maximum of six transects are sampled each year by divers. All lobsters harvested are measured, sexed and their moulting stage is noted. These data are integrated into stock assessments, reports on the status of exploited stocks and scientific publications.



## Objectives

1. Assessment of abundance, recruitment, size structure and molting status of lobster and rock crab populations;
2. Assessment of condition indices and mating success in lobster;
3. Assessment of biodiversity (identification and abundance of other species harvested);
4. Assessment of lobster benthic deposition, strength of early age classes and growth during the first 2-3 years of benthic life; and
5. Collection of environmental data and samples for various research projects.

