

Multidisciplinary survey in the estuary and northern Gulf of St. Lawrence

Dates: August

Recurrence: Annually, since 1990

Location: Estuary and northern Gulf of St. Lawrence

Vessel: *CCGS John Cabot*



CCGS John Cabot

Description

Fisheries and Oceans Canada conducts an annual multidisciplinary survey in the Estuary and the northern Gulf of St. Lawrence.

The results obtained will be used, among other things, to provide scientific advice on the status of cod, Atlantic halibut, Greenland halibut, redfish, capelin and northern shrimp stocks.

Objectives

1. Assess the abundance and condition of groundfish and northern shrimp populations;
2. Assess environmental conditions;
3. Inventory the biodiversity of benthic and demersal megafauna;
4. Assess the abundance of phytoplankton and meso-zooplankton;
5. Carry out temporal monitoring of the pelagic ecosystem; and
6. Collect samples for various research projects.

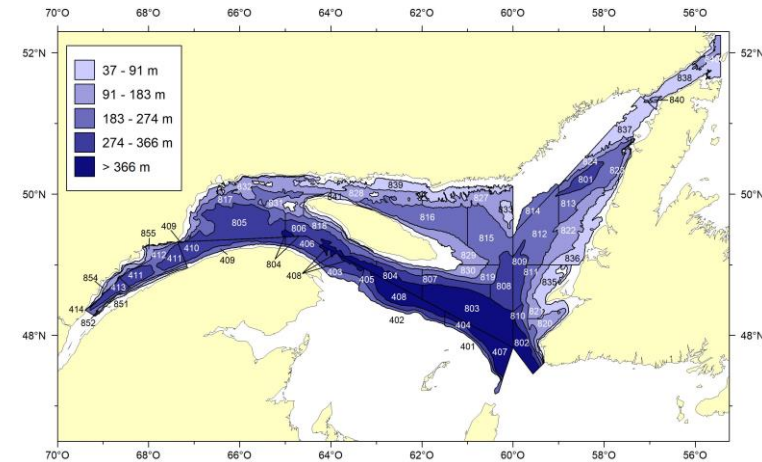


Figure 1: Study area covered by the survey. Depths vary between 37 m and 525 m.

