

Monitoring of coral & sponge marine refuges

Dates: July- August

Recurrence: Opportunistic

Location: Coral & Sponge Marine Refuges in the Gulf of St. Lawrence

Vessel: GCCS platform or charter vessel (*Coriolis II*)

Description

In the coral & sponge marine refuges, 3 missions (2019-2022-2023) took place to better characterize the benthic habitats and species including sea pens and sponges. These data will allow us to develop an ecological monitoring program to observe the evolution of those areas and the species found there. In the coming years, an underwater imagery protocol and complementary sampling will be developed and implemented for long-term monitoring of the marine refuges.

Objectives

1. Collect videos and photos of the seabed;
2. Collect sediment and endobenthos samples; and
3. Collect oceanographic data and sample water (environmental DNA, pH analysis).

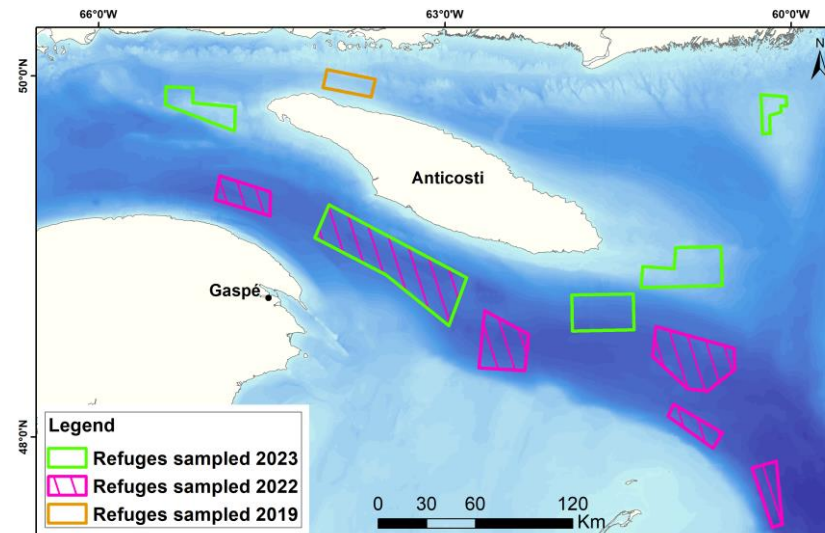


Figure 1: Study area (coral & sponge marine refuges) in the Gulf of St. Lawrence.

