

Snow Crab Survey in the Estuary and Gulf of St. Lawrence

Dates: End of April, end of June to mid-July

Recurrence: Annually, since 1992

Location: Estuary, Middle and Lower North Shore

Vessel: CCGS *LEIM*

Description

DFO scientific trawl surveys in support of snow crab (*Chionoecetes opilio*) assessments are used to document short, medium and long-term recruitment in the sampled areas. The results of these surveys are used to make recommendations to fisheries management to assist in establishing annual commercial fishing quotas based on the abundance cycle of crab stocks.



Snow crab (*Chionoecetes opilio*)



Objectives

1. Conduct fishery-independent scientific surveys using a beam trawl to determine the status of snow crab stocks in management units 17, 16, 14 and 13;
2. Maintain time series of male and female abundance indices for trend monitoring; and
3. Collect information on the distribution and abundance of other coastal species as well as environmental data such as temperature and salinity.

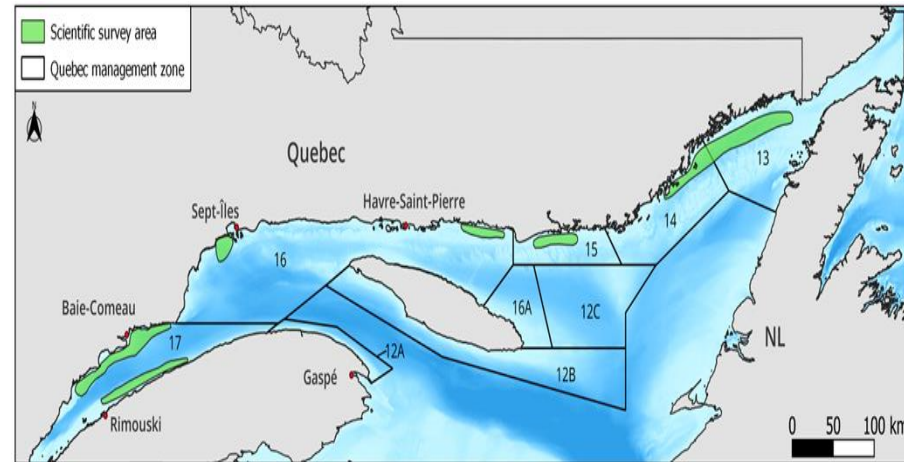


Figure 1: Snow crab management units and sectors sampled during surveys